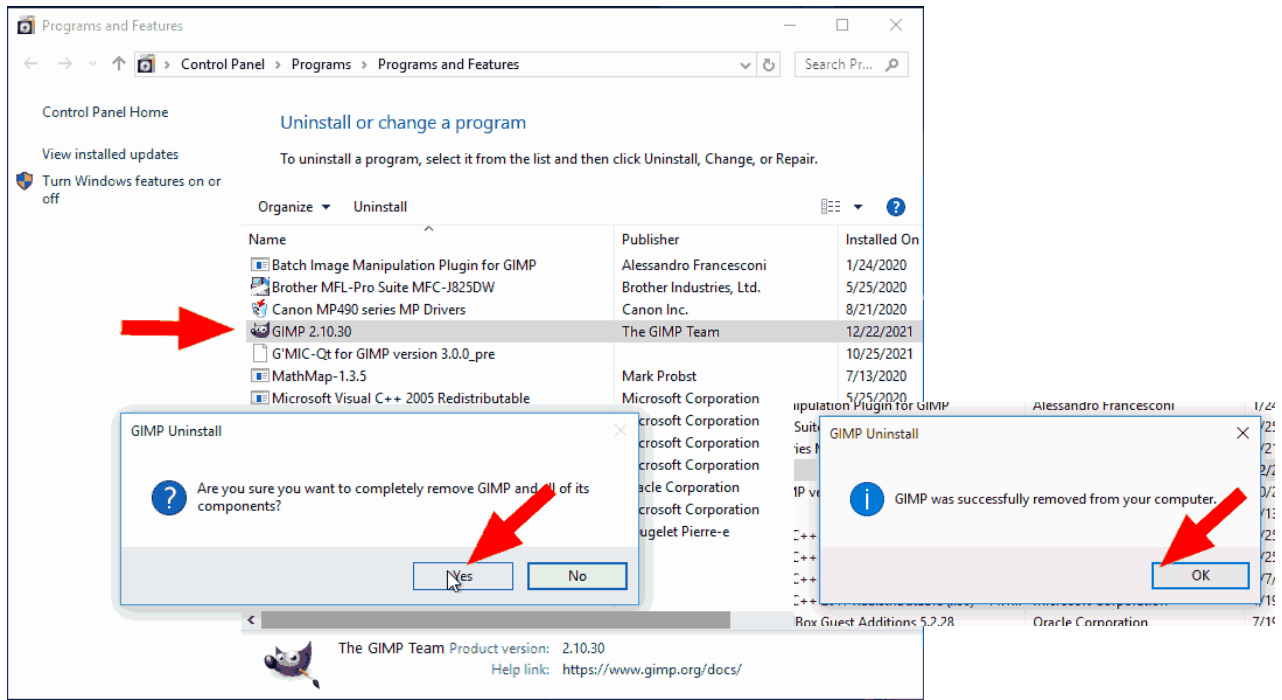


Windows Users:

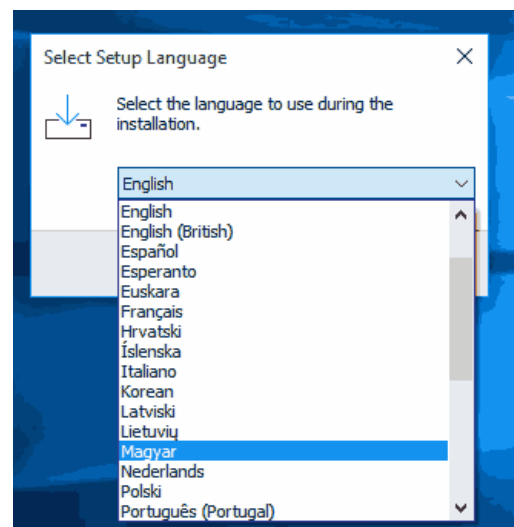
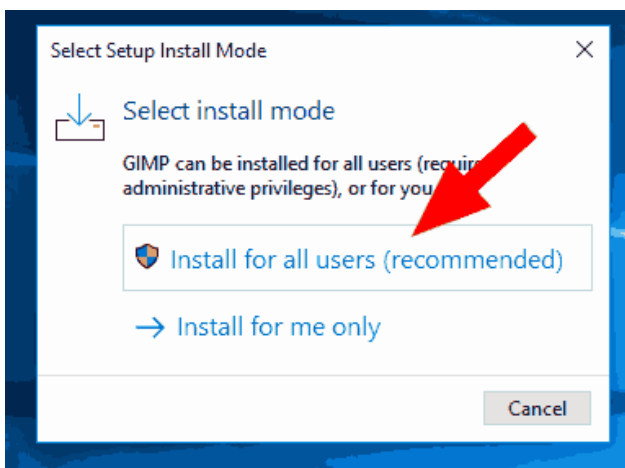
Need to install Gimp in a location other than the default C:\Program Files\... but the installer always uses that location ? The Windows installer will look for an existing Gimp installation in the Windows registry and use the same settings.

For a new or a re - installation:

1. Uninstall Gimp using the Windows uninstall menu and get a successful notice.
No good just deleting the Gimp files, registry entries remain.

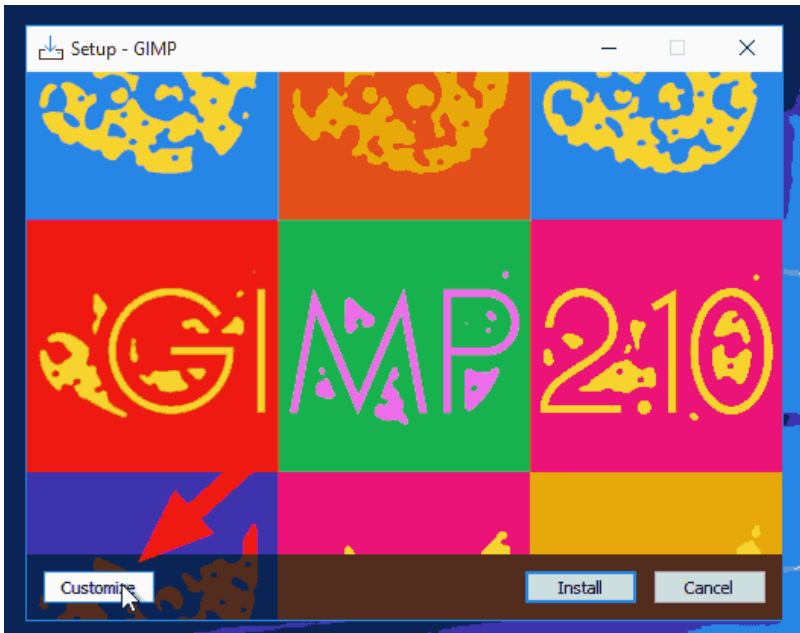


2. Start the Gimp installer and choose the Install Mode. The default 'All Users' is preferred.



..and select your language

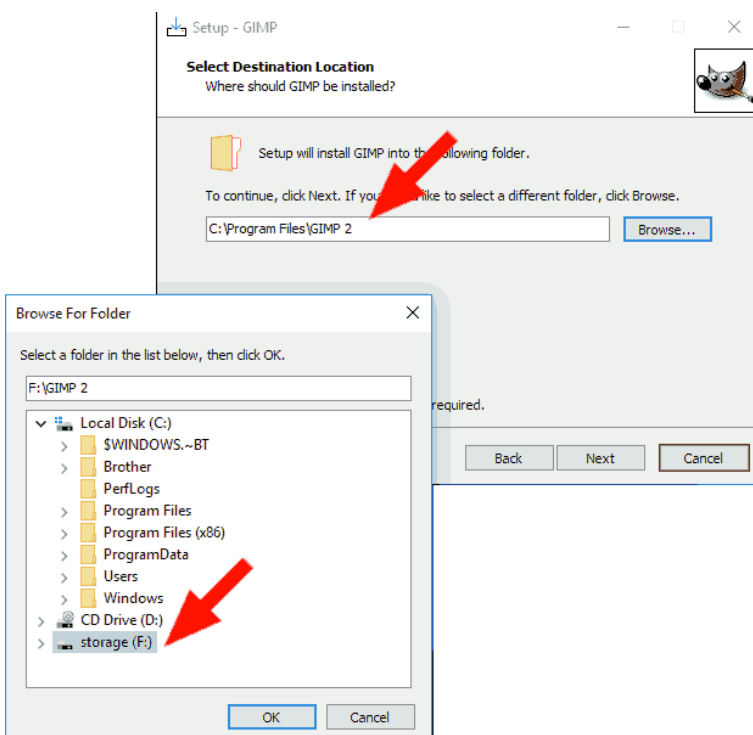
3. Choose the Customise option.



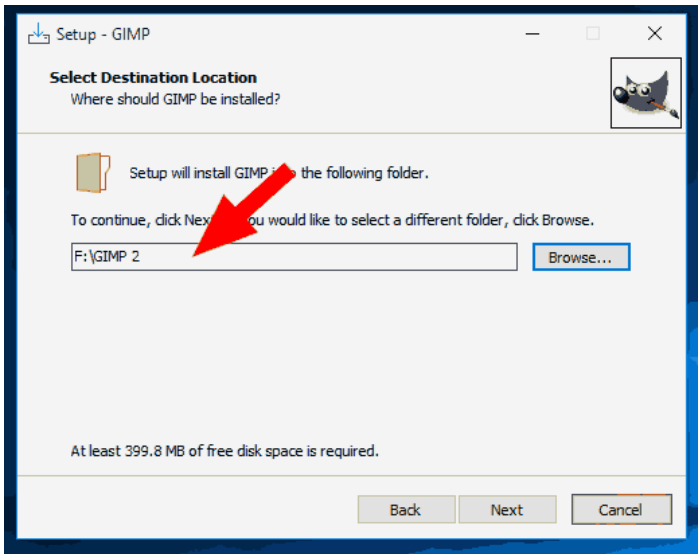
Accept the terms and click Next



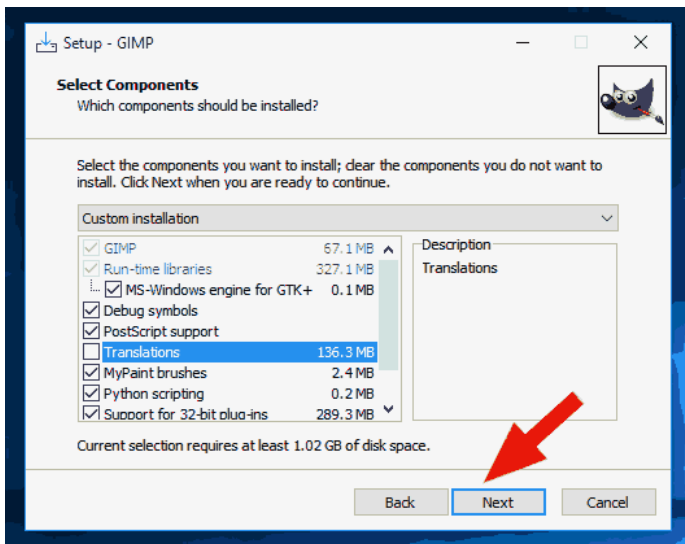
4. That gives the default location C:\Program Files\.. so click on Browse and choose the new location



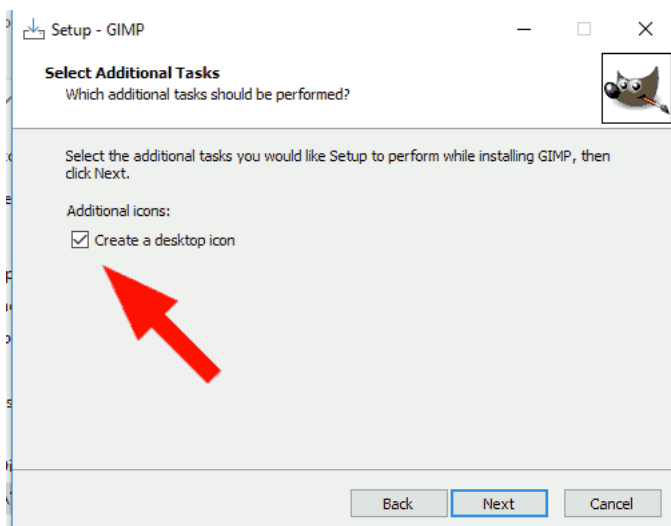
5. Check that it is correct and click Next



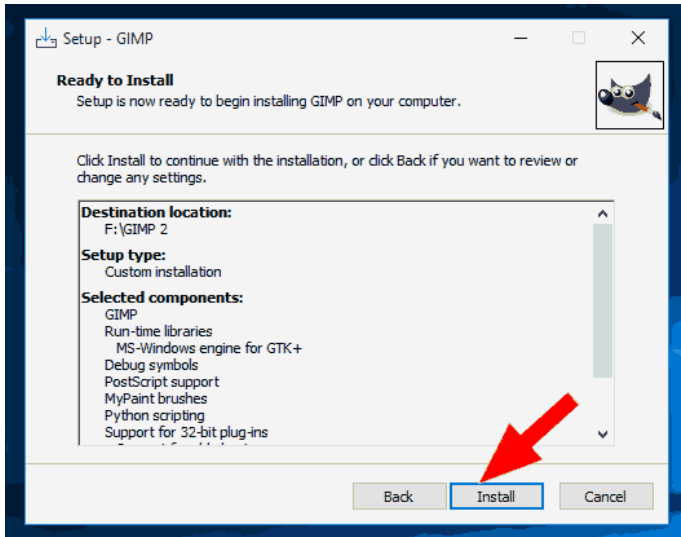
6. Select components, most users accept all, but if short on disk space unticking Translations saves 130 MB



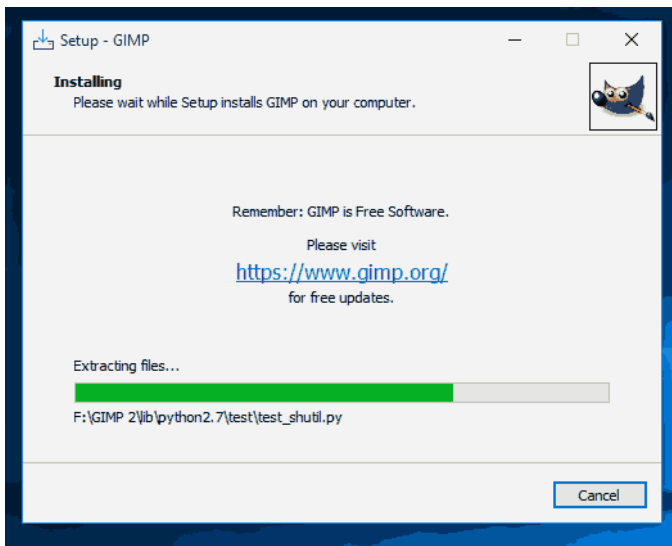
7. Want a desktop icon ? Tick the option



8. Click on Install



9. Wait for the installation to complete



10. ...and Finish.

